

Come valuti il servizio dell'attività ambulatoriale e diagnostica?



78%
113 risp.



10%
15 risp.



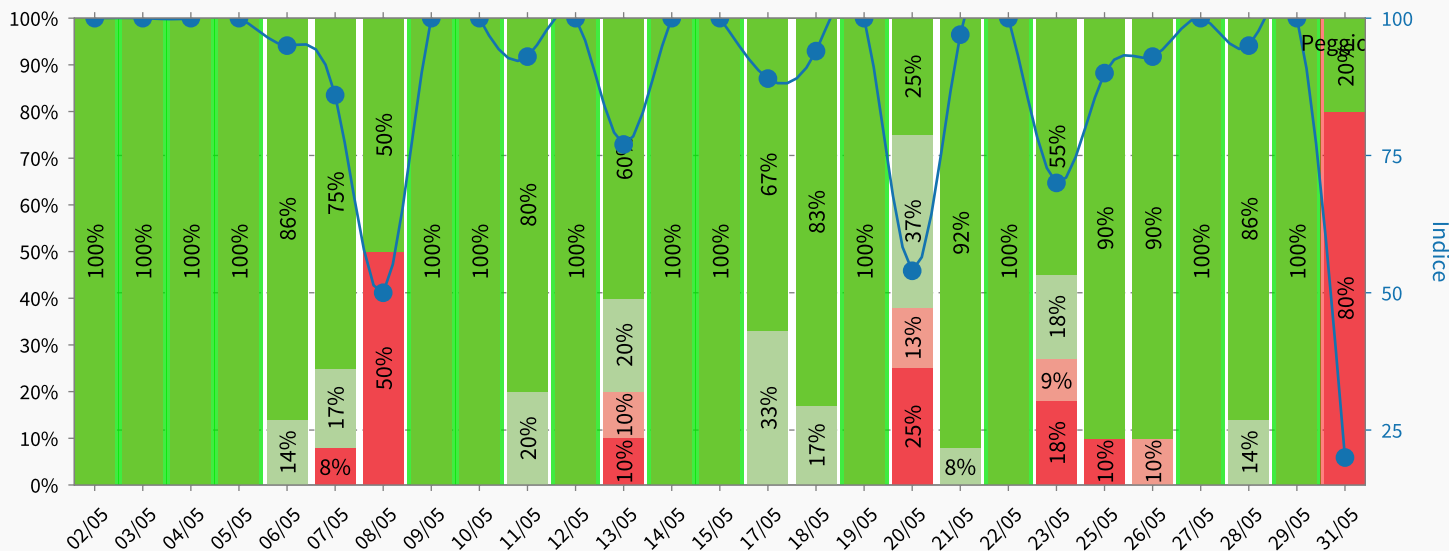
3%
4 risp.



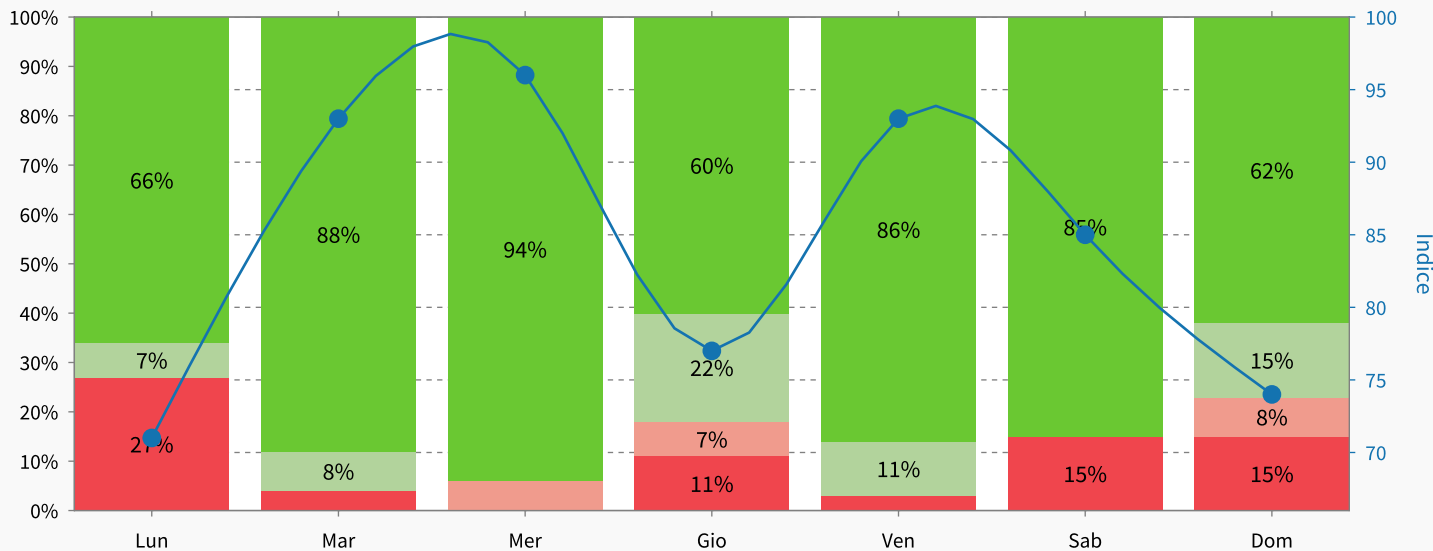
9%
13 risp.

Indice: 86.0
Risposte: 145

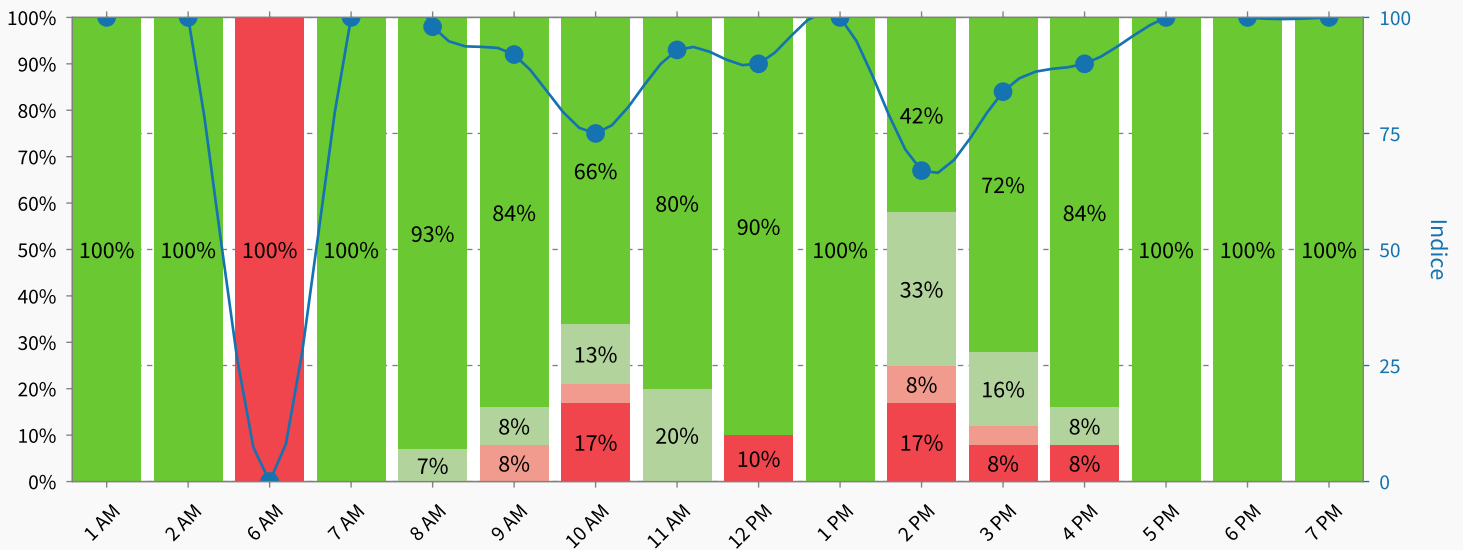
Distribuzione giornaliera



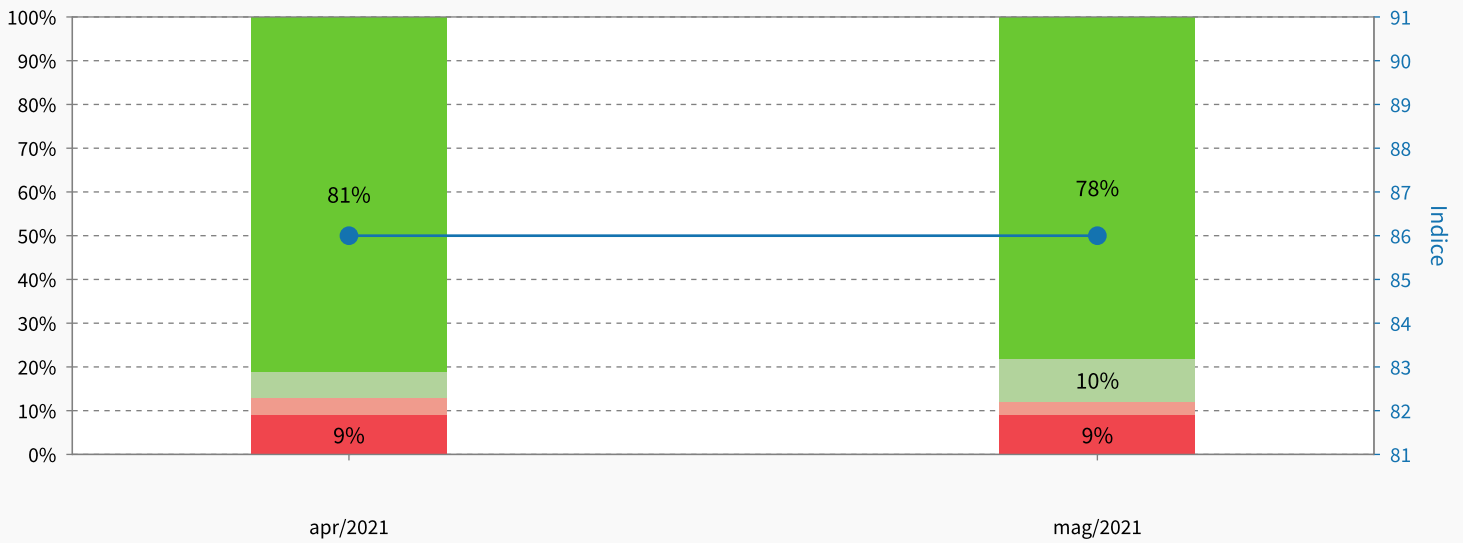
Distribuzione giorni feriali



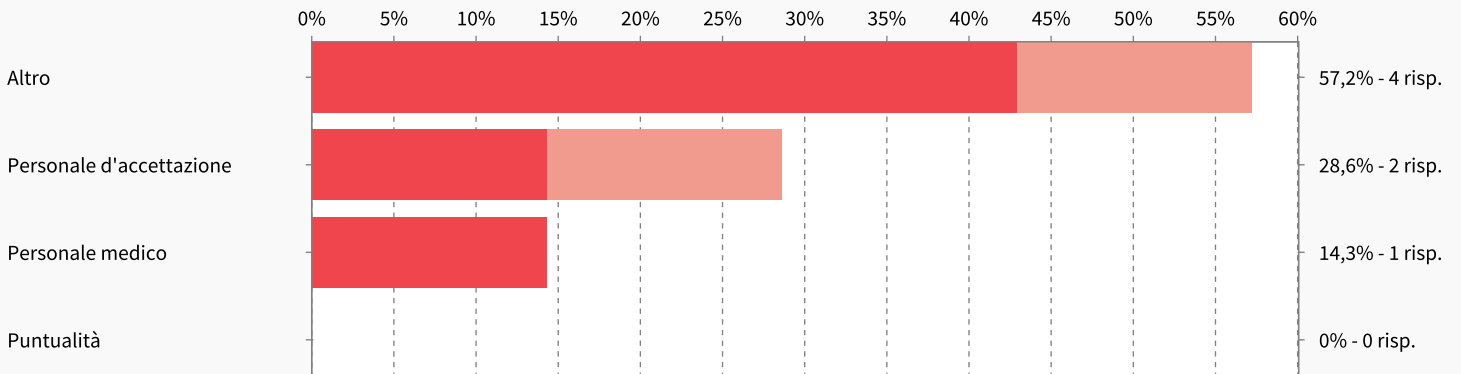
Distribuzione oraria



Stessa domanda, confronto con i mesi precedenti



Punti Deboli



In evidenza

