

Come valuti il servizio dell'attività ambulatoriale e diagnostica?



61%
1,076 resp.



13%
235 resp.



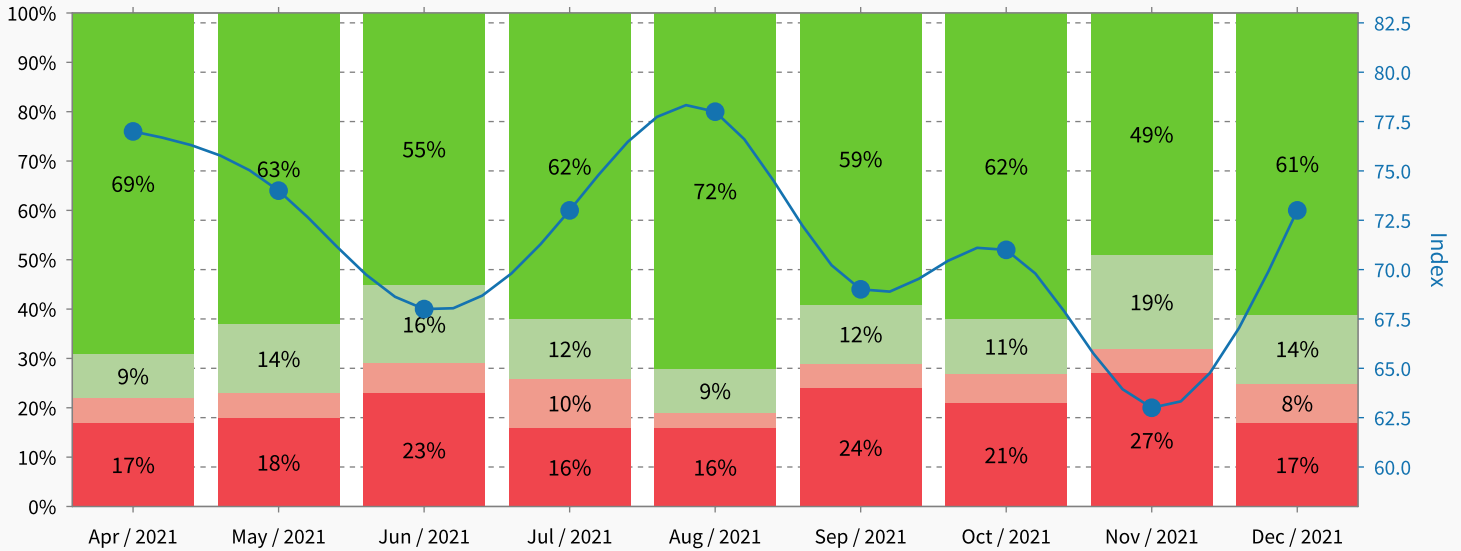
6%
108 resp.



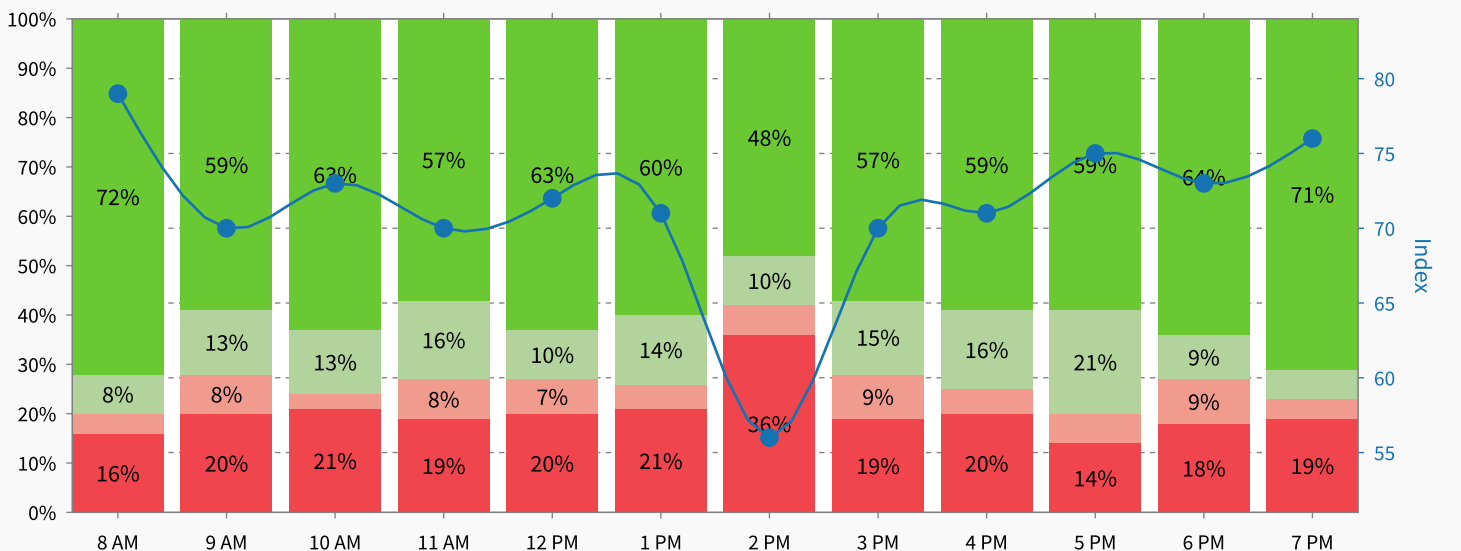
20%
357 resp.

Index: 71.0
Responses: 1,776

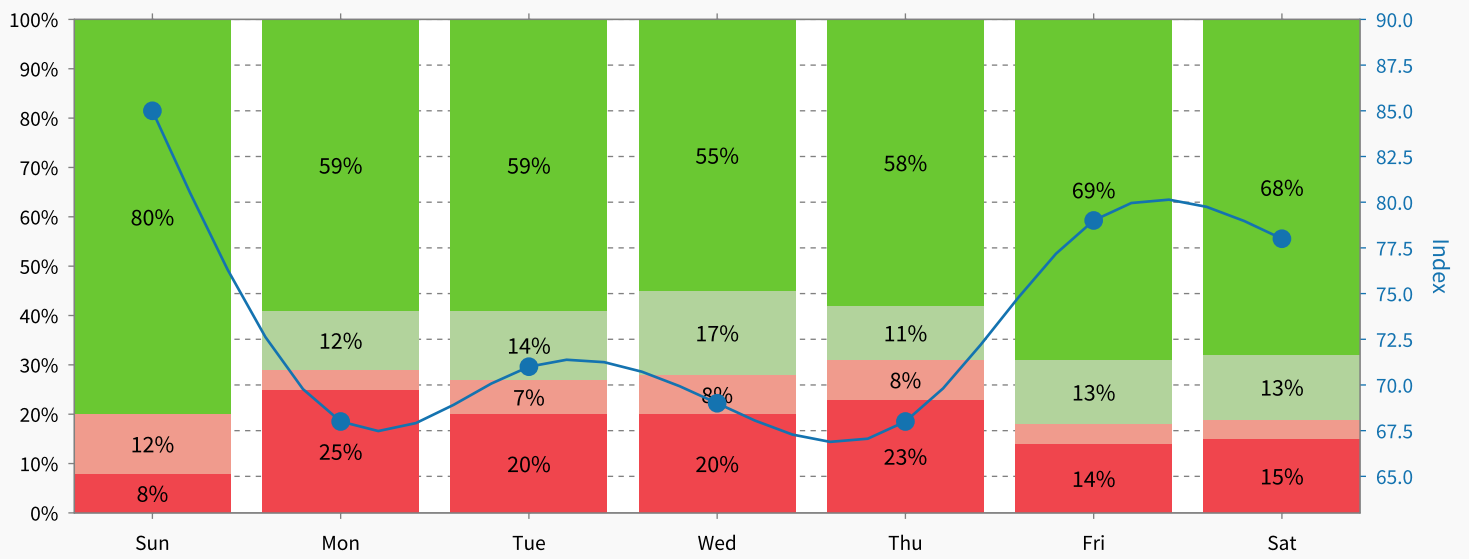
All units combined - monthly distribution



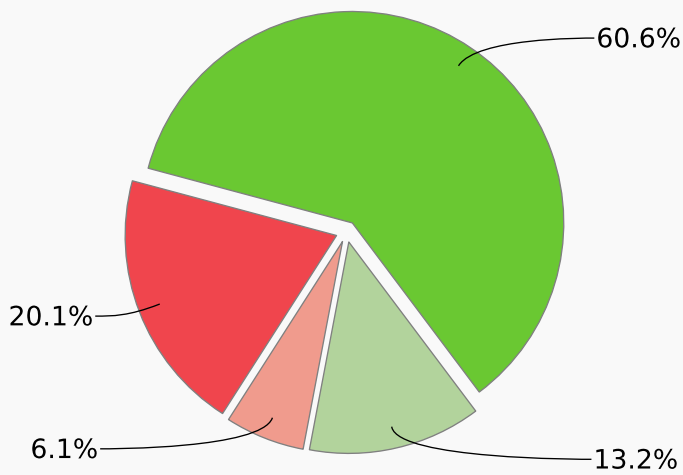
All units combined - hourly distribution



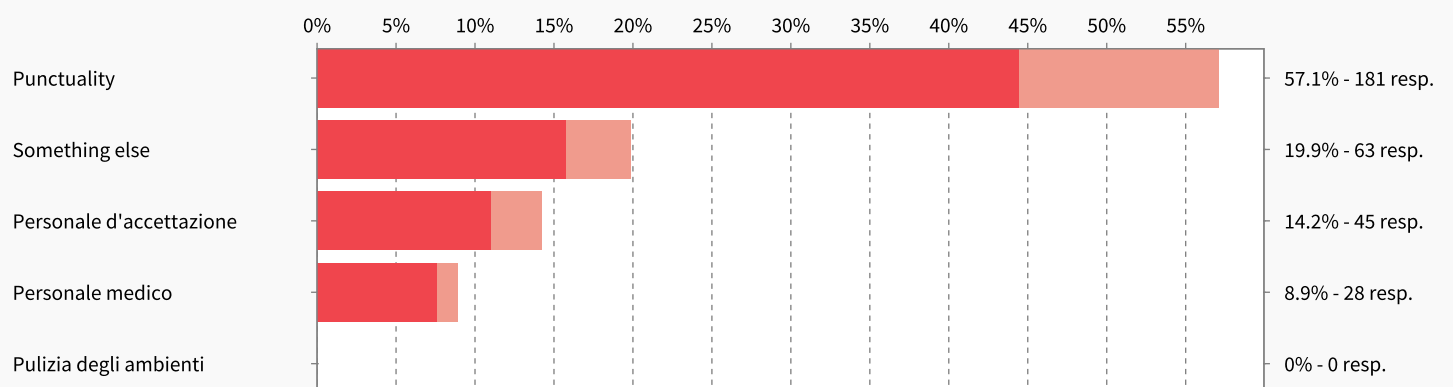
All units combined - weekday distribution



Total results



Pain Points



Highlights

