

Come valuti il servizio dell'attività ambulatoriale e diagnostica?



72%  
1,337 resp.



9%  
160 resp.



4%  
82 resp.

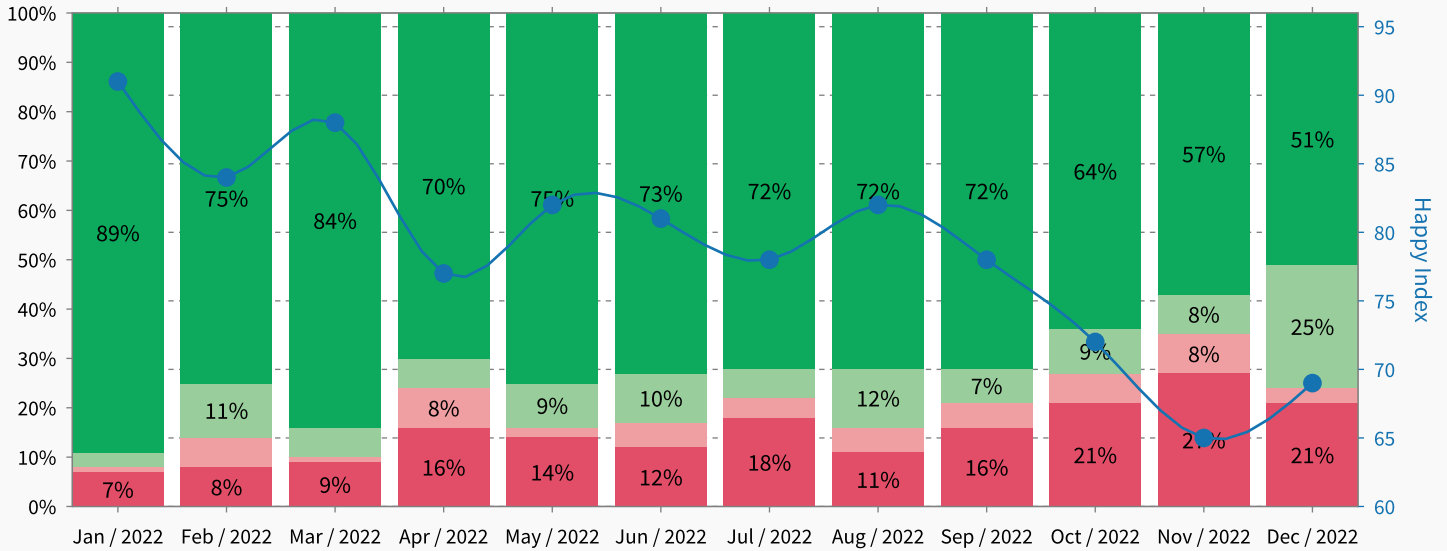


15%  
279 resp.

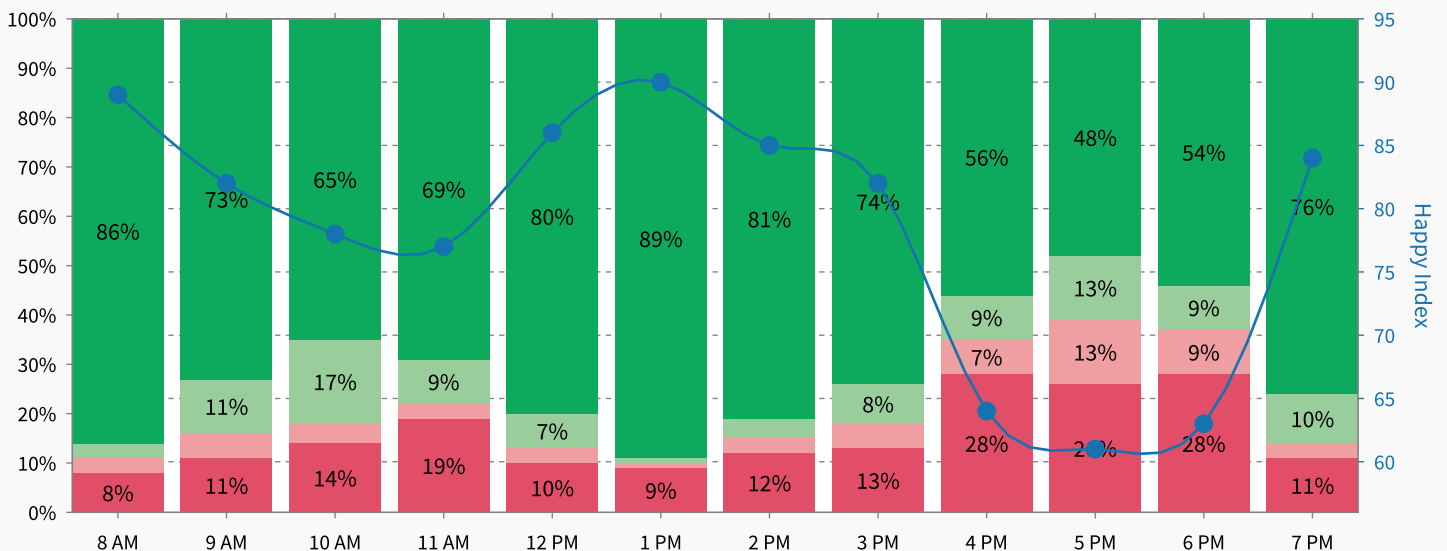
Happy Index: 79/100

Responses: 1,858

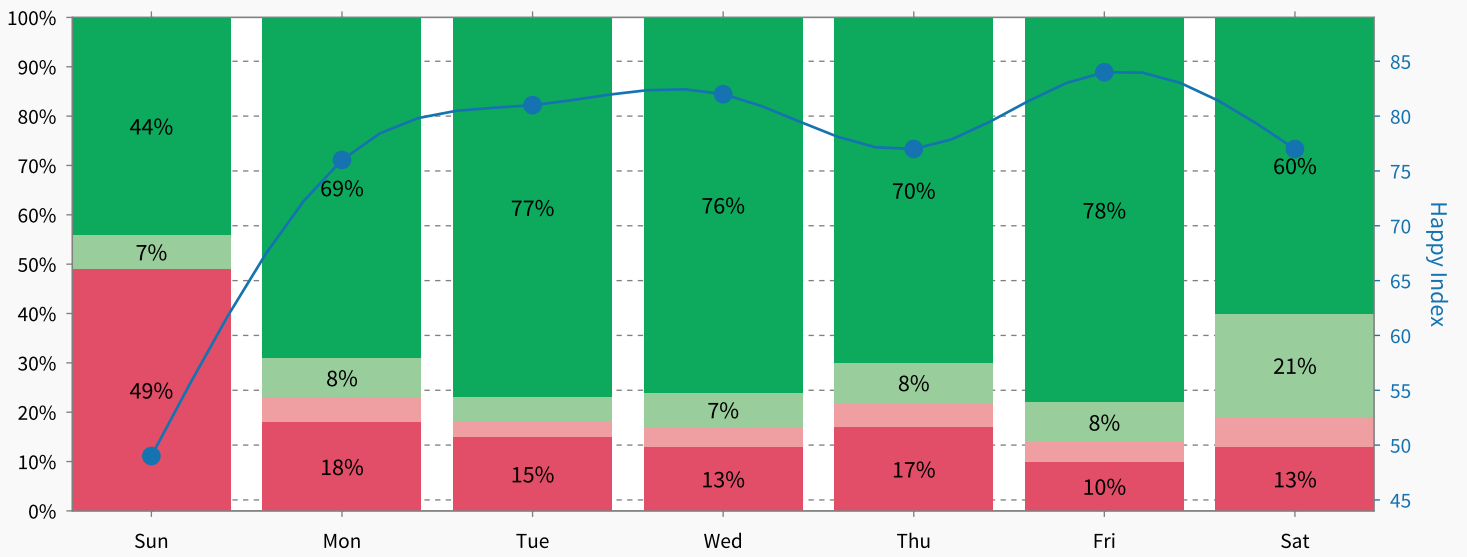
All units combined - monthly distribution



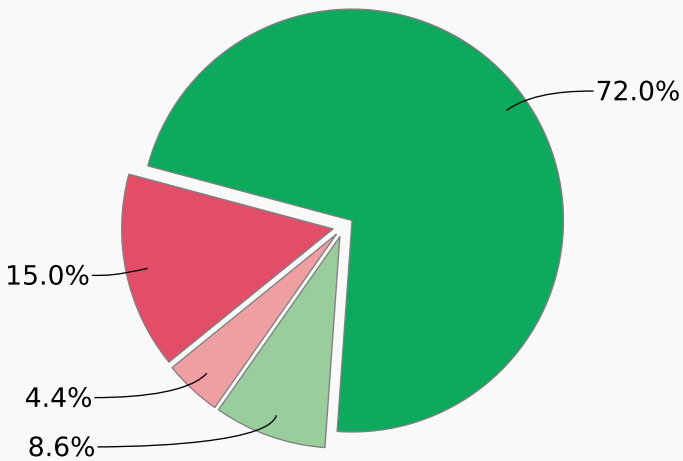
All units combined - hourly distribution



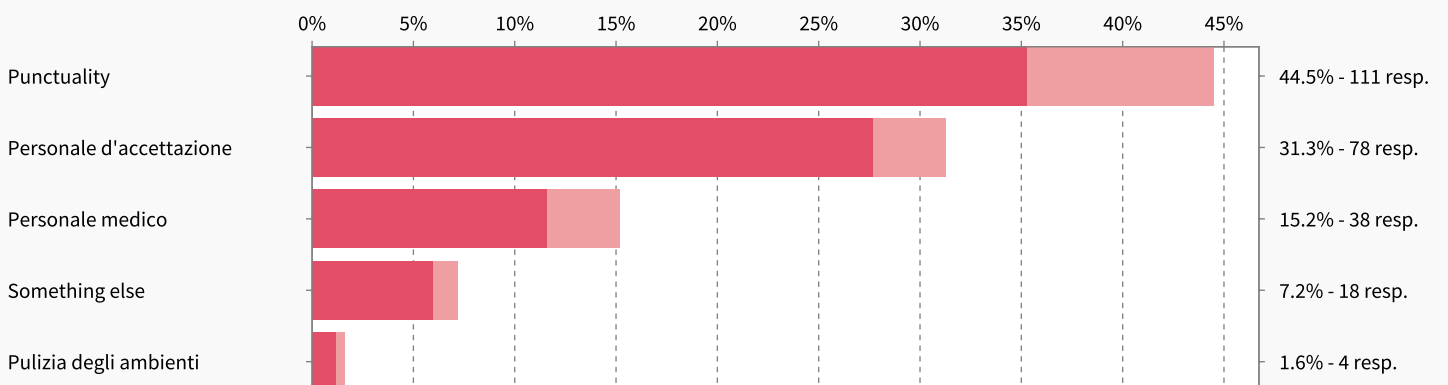
All units combined - weekday distribution



Total results



Pain Points



### Highlights

