

Come valuti il servizio pronto soccorso?



92%  
45 risp.



4%  
2 risp.



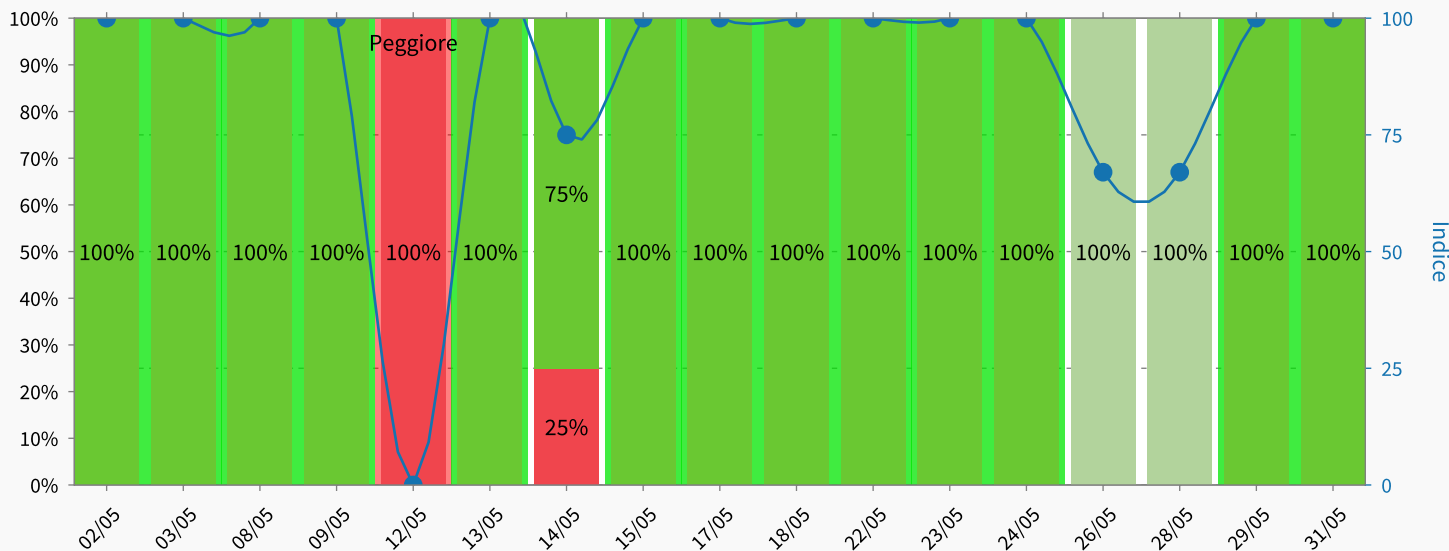
0%  
0 risp.



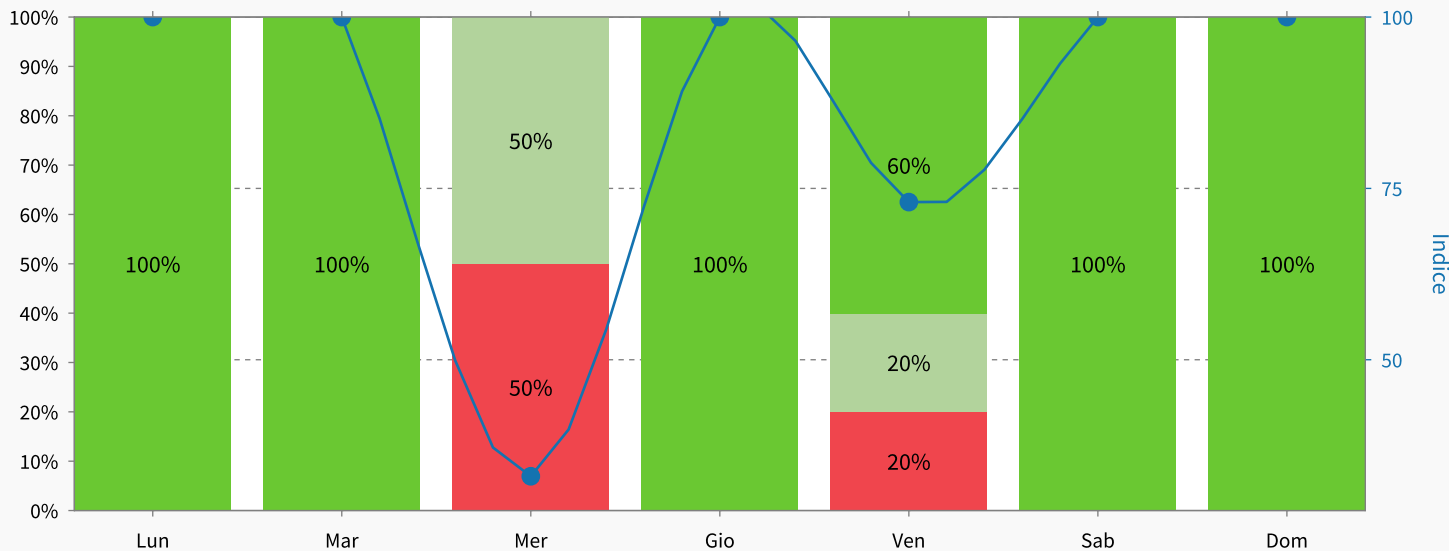
4%  
2 risp.

**Indice: 95.0**  
**Risposte: 49**

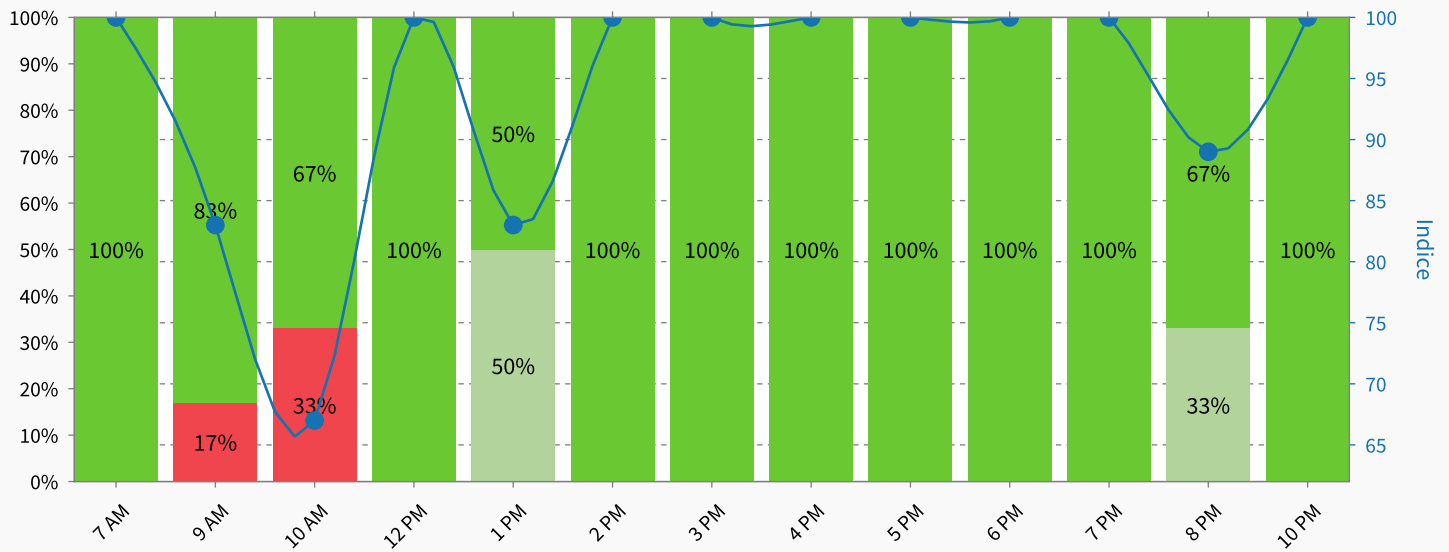
Distribuzione giornaliera



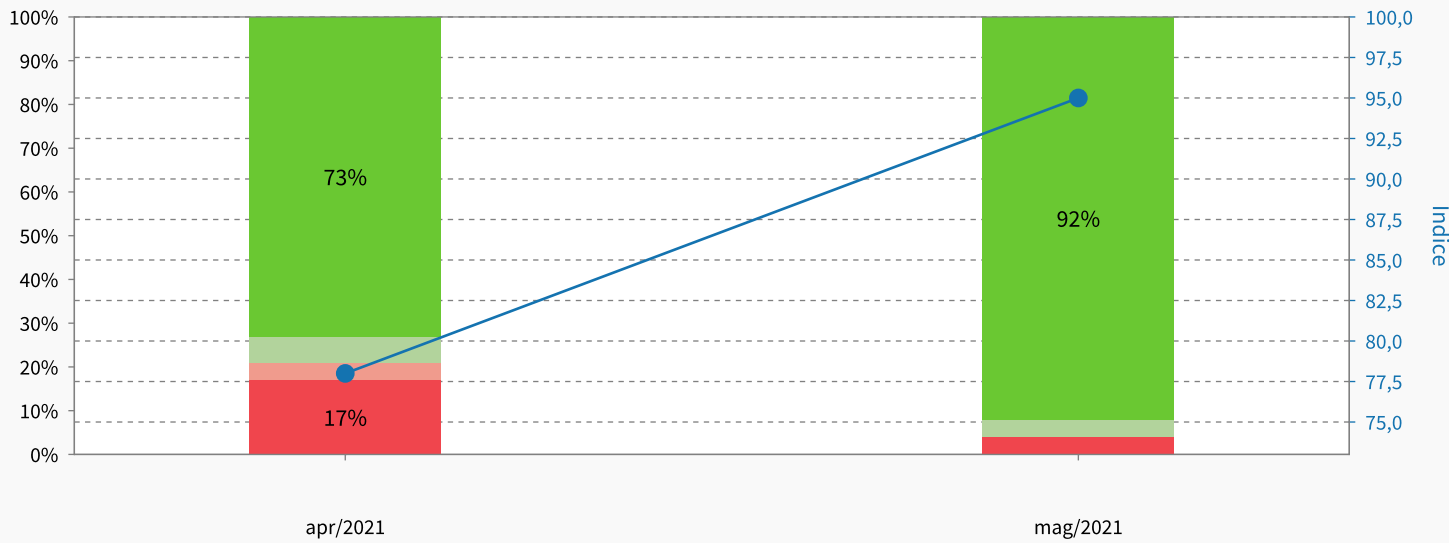
Distribuzione giorni feriali



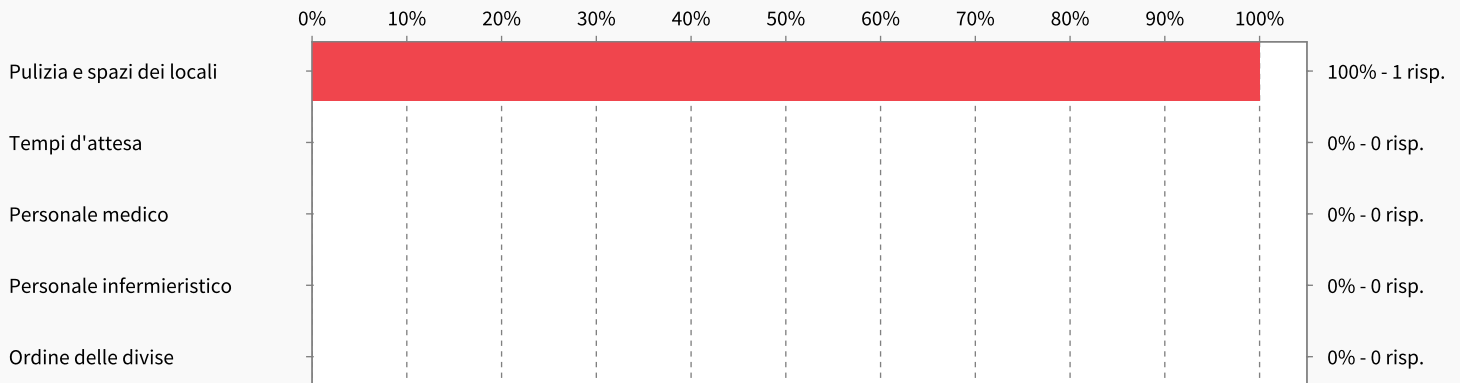
Distribuzione oraria



Stessa domanda, confronto con i mesi precedenti



Punti Deboli



In evidenza

